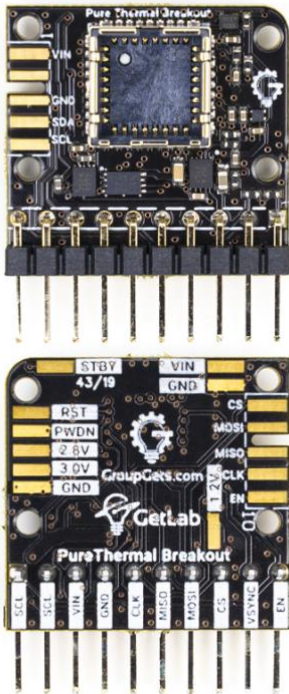


GroupGets PureThermal Breakout Board



The PureThermal Breakout Board is an easy to interface evaluation board used to quickly evaluate the FLIR Lepton® thermal camera modules. It's compatible with many low-cost ARM based evaluation boards, in addition it's easy to connect to pin outs for Arduino or via short jumper wires to Raspberry Pi.

FEATURES

- Compatible with Lepton 2.x and 3.x
- Access to SPI and I2C camera module interfaces
- Provides 25-MHz reference clock
- Provides Power Regulation from 3.3-5V input
- 32-pin Molex camera socket for Lepton® Module
- PureModules compatible connector
- VSync and Enable Pins

APPLICATIONS

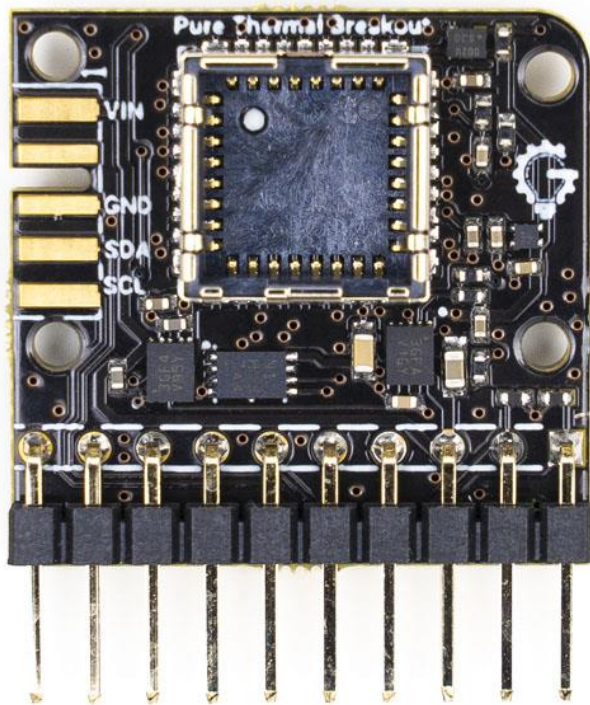
- Thermal Imaging
- Non-contact temperature measurements
- Motion Sensing
- Night Vision
- Gesture Recognition

PureThermal Breakout Board Specifications

Power Inputs	3.3-5V
Maximum Input Voltage	5V
Lepton Core Support	Lepton 2.x and 3.x
Thermal Video Outputs	SPI
PureThermal Mini Part Number	GG-PURETHERMAL-BB1.0
PureModules Connector	AVX: 009159010061916

Application Information

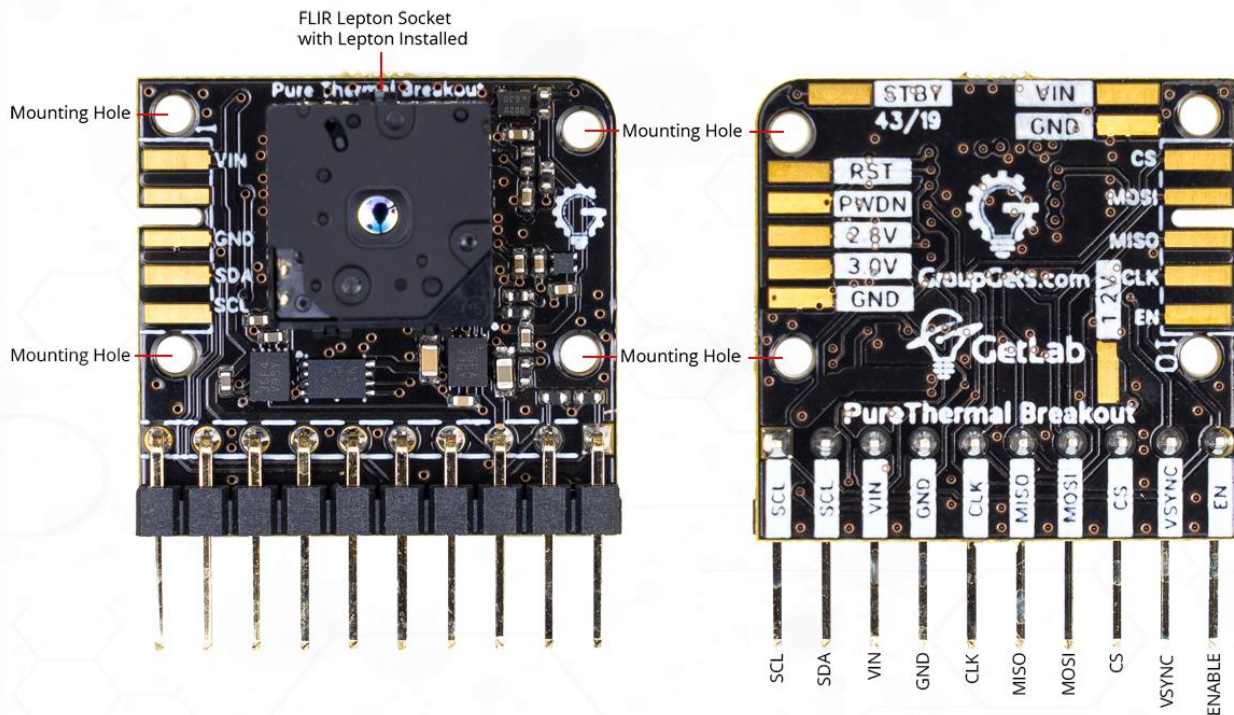
FLIR Lepton [Software, SDK, Guides](https://lepton.flir.com/software-sdk/) - <https://lepton.flir.com/software-sdk/>



Pinouts

Pin 1 - SCL	Camera Control Interface Clock, I2C
Pin 2 - SDA	Camera Control Interface Data, I2C
Pin 3 - VIN	3-5 V Supply input
Pin 4 - GND	Common Ground
Pin 5 - CLK	Video Over SPI Slave Clock
Pin 6 - MISO	Video Over SPI Slave Master In Slave Out
Pin 7 - MOSI	Video Over SPI Slave Master Out Slave In
Pin 8 - CS	Video Over SPI Slave Chip Select (active LOW)
Pin 9 - VSYNC	VSync
Pin 10 - EN	Enable, Active High

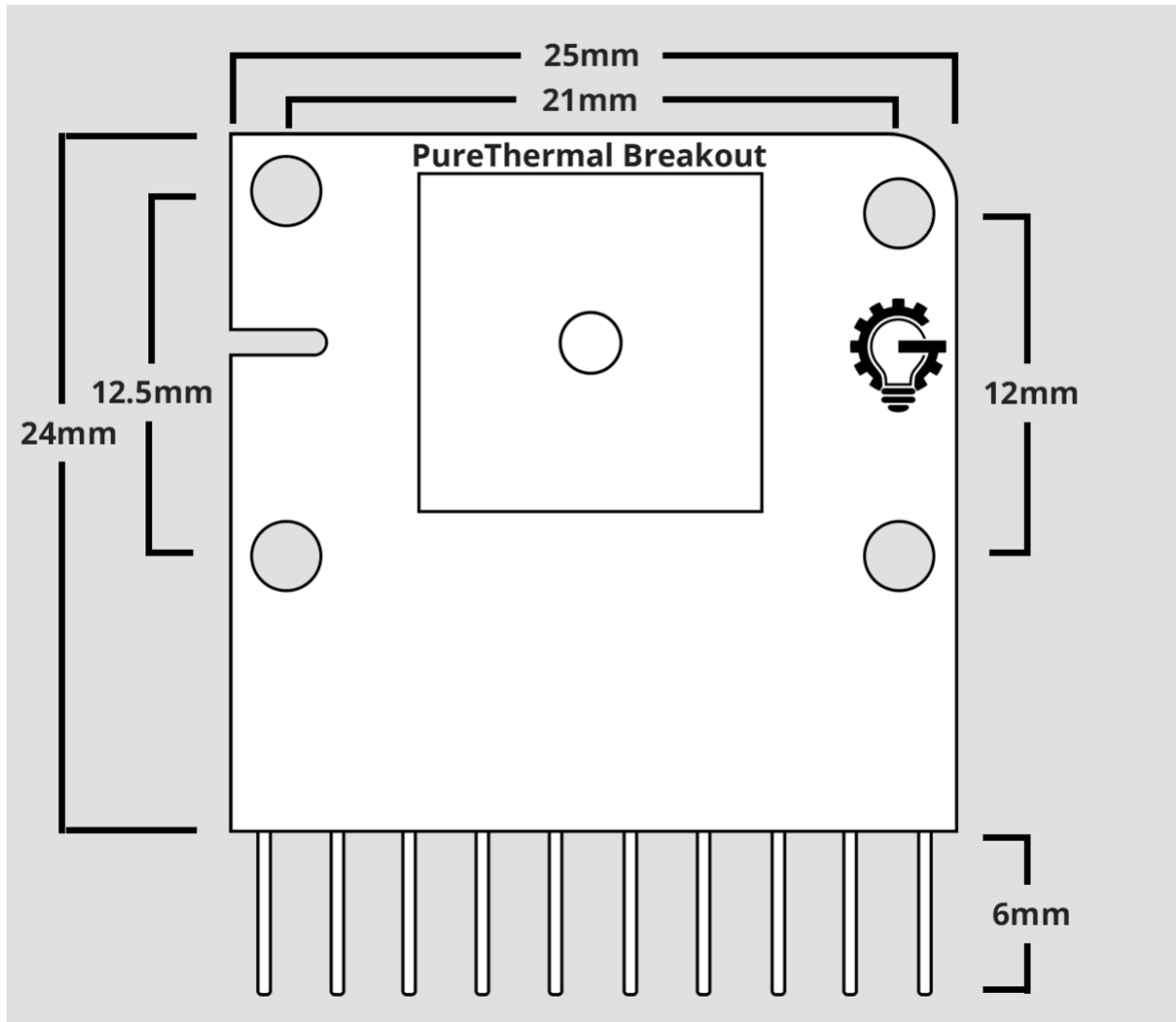
PureThermal Breakout Board

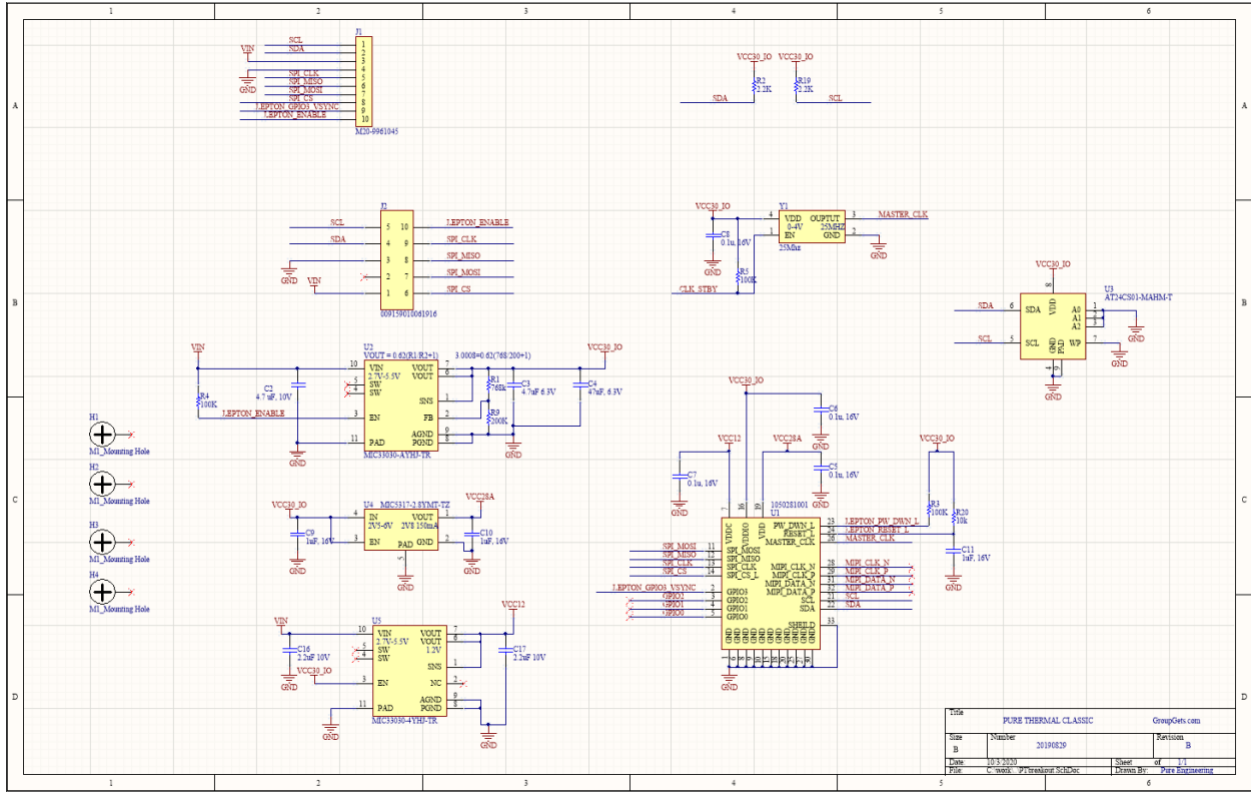


•PureThermal Breakout Board supports all FLIR Lepton 2.x - 3.x cores with and without radiometry



Dimensions





Document Version 1.3 – October 5th, 2020